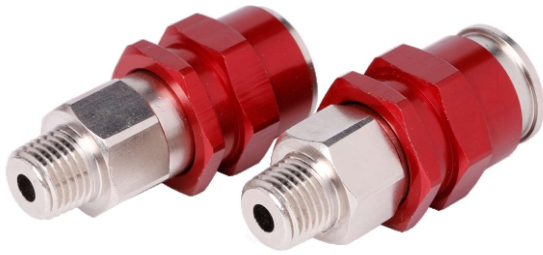


UC Series 2 In 1 American Type Quick Coupling

 Self sealing socket+Thru-type plug



Compatible with

FOKCA	IN20,AR20
INDUSTRIAL	1/4"
PARKER	20,50
ARO	210
ORION	44510

Features

UC20 series quick couplings can be interchanged with ARO210, Parker 20 series Industrial 1/4" series. A female coupler can be compatible with IN20 and AR20 nipples or plugs. The body is made of brass with nickel-plated, and its sleeve is made of aluminum alloy with oxidation treatment. There are a variety of colors to be chosen, by which it is very convenient to distinguish when multiple pipelines are concentrated.

This series of quick couplings adopts a structure of 6 locking balls, which has small size, light weight, lower cost, safe and reliable. The maximum working pressure is 2.0MPa. Its flow characteristics are equivalent to UB20 series. The push-to-connect structure is easy for one-handed operation. Currently It is 1/4" flow rate body available only. If a larger flow rate is required, you are recommended to choose EU20 or IN30, IN40 series.

Ordering code

UC 20 - SF - 02 B

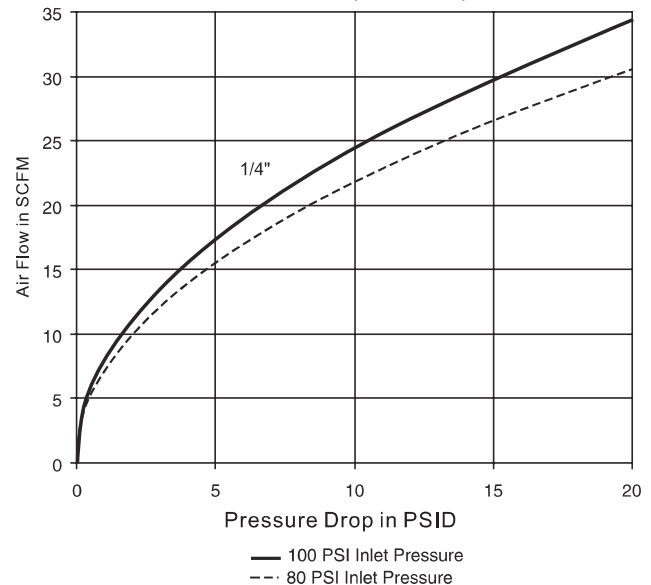
- ◆ Universal C series
- ◆ Body size
20: 1/4"
- ◆ Coupling type
SF: Female socket
SM: Male socket
SH: Hose barb socket
SN: Nut lock socket
PF: Female plug
PM: Male plug
PH: Hose barb plug
PN: Nut lock plug
- ◆ Thread code
02: 1/4"NPT
03: 3/8"NPT
04: 1/2"NPT
- ◆ Material code
B: Brass
S: Carbon steel
SS: Stainless steel SUS304/303
A: Aluminum alloy

Specification

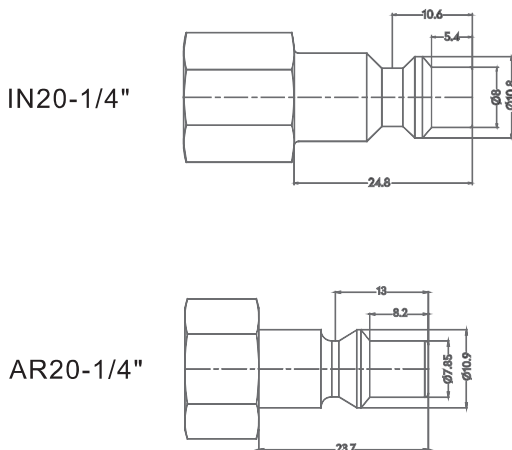
Series	UC20
Body Size(in.)	1/4"
Rated Pressure(MPa)	2.0MPa
Temperature Range	-10°C ~ +70°C
Locking Device	6 balls

Performance

UC20 Series (1/4" sizes)



Plug profile

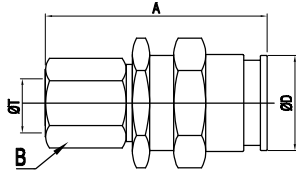


UC Series 2 In 1 American Type Quick Coupling

Self sealing socket+Thru-type plug

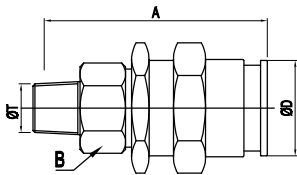
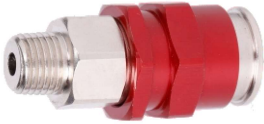
Sockets/Couplers

Female Pipe Thread



Model	Body Size	Thread -T	Overall (A)	Hex Size (B)	Diameter (D)
UC20-SF-02	1/4	1/4"NPT	55	19	28

Male Pipe Thread



Model	Body Size	Thread -T	Overall (A)	Hex Size (B)	Diameter (D)
UC20-SM-02	1/4	1/4"NPT	55	19	28