

AR Series Aro210 Standard Quick Coupling

Self sealing socket+Thru-type plug



Features

AR20 series, Parker 50 series, ARO210 and Orion 44510 series are interchangeable from one another. The outer profile of the nipples of them are completely same, and they can be compatible with each other. It is usually made of carbon steel with zinc plated or brass acid pickling on the surface. The internal element structured of brass, it is designed with 4 steel balls, and the maximum working pressure is 2.0MPa.

If you replace it with FKM fluorine rubber, it can also work under high temperature conditions. Our regular AR20 series is designed with a 1/4" flow rate body size only. If a larger flow rate is required, it is recommended to choose IN30, IN40 series.

Ordering code

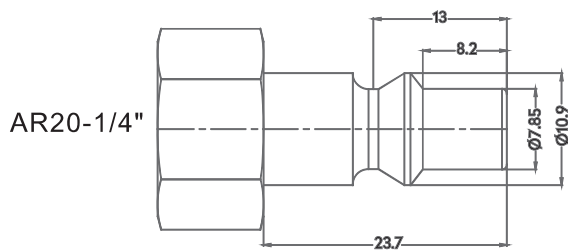
AR 20 - SF - 02 B

- ◆ ARO210 series
- ◆ Body size
20: 1/4"
- ◆ Coupling type
SF: Female socket
SM: Male socket
SH: Hose barb socket
SHL: Hose barb lock type socket
SN: Nut lock socket
PF: Female plug
PM: Male plug
PH: Hose barb plug
PHL: Hose barb lock type plug
PN: Nut lock plug
- ◆ Thread code
02: 1/4"NPT
03: 3/8"NPT
04: 1/2"NPT
- ◆ Material code
B: Brass
S: Carbon steel
SS: Stainless steel SUS304/303

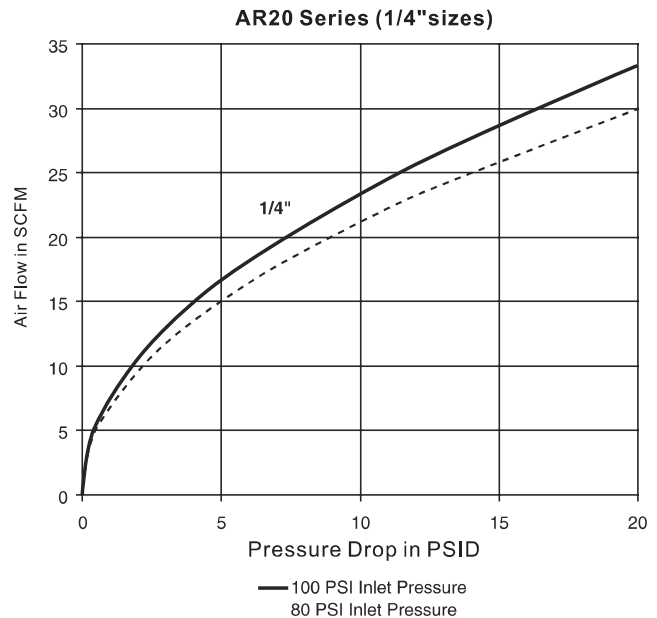
Specification

Series	AR20
Body Size(in.)	1/4"
Rated Pressure(MPa)	2.0MPa
Temperature Range	-10°C ~ +70°C
Locking Device	4 balls

Plug profile



Performance



Compatible with

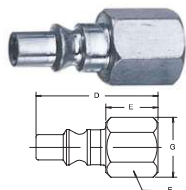
FOKCA	AR20
PARKER	50
ARO	210
ORION	44510
RECTUS	14,22
FOSTER	210
CEJN	300
AMFLO	C38

AR Series Aro210 Standard Quick Coupling

—○—+— Self sealing socket+Thru-type plug

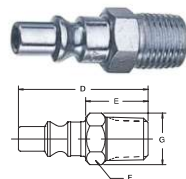
Plugs/Nipples

Female Pipe Thread



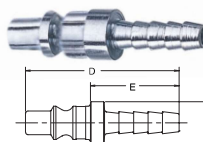
Model	Body Size	Thread -NPT	Overall (D)	Exposed (E)	Hex.Size (F)	Diameter (G)
AR20-PF-02	1/4	1/4-18	37.3	16.8	15.7	18.3

Male Pipe Thread



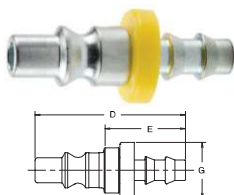
Model	Body Size	Thread -NPT	Overall (D)	Exposed (E)	Hex.Size (F)	Diameter (G)
AR20-PM-02	1/4	1/4-18	41.1	20.8	14.2	16.5

Standard Hose Barb



Model	Body Size	Hose I.D.	Overall (D)	Exposed (E)	Diameter (G)
AR20-PH-1/4	1/4	1/4	41.4	21.6	10.9

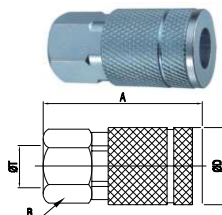
Push-Lok Hose barb



Model	Body Size	Hose I.D.	Overall (D)	Exposed (E)	Diameter (G)
AR20-PHL-1/4	1/4	1/4	41.9	22.1	10.9

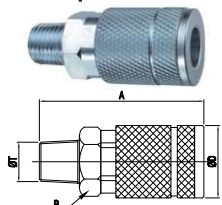
Sockets/Couplers

Female Pipe Thread



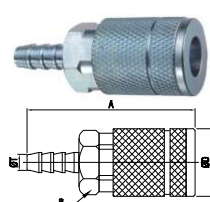
Model	Body Size	Thread -NPT	Overall (A)	Hex.Size (B)	Diameter (D)
AR20-SF-02	1/4	1/4-18	46.5	19	22.9
AR20-SF-03	1/4	3/8-18	49.5	21	23.9

Male Pipe Thread



Model	Body Size	Thread -NPT	Overall (A)	Hex.Size (B)	Diameter (D)
AR20-SM-02	1/4	1/4-18	52.1	19.1	22.9
AR20-SM-03	1/4	3/8-18	52.8	19.1	22.9

Standard Hose Barb



Model	Body Size	Hose I.D.	Overall (A)	Exposed (B)	Diameter (D)
AR20-SH-1/4	1/4	1/4	58.9	19.1	22.9
AR20-SH-3/8	1/4	3/8	62.7	19.1	22.9