

# IH Series High Pressure Type Quick Coupling

 Self sealing socket+Thru-type plug



## Features

IH series pneumatic quick coupling are compatible with Parker's 20 Industry series nipple or plug. Usually, the body is made of brass material, and the sleeve and the nipple or plug is made of carbon steel with zinc or nickel plated. There are 6 steel balls inside, which can bear higher working pressure. If it is replaced with FKM(Viton), it can work under high temperature and high pressure conditions.

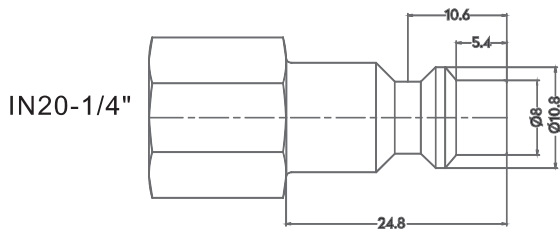
For uses in special environments such as seawater or corrosive or high temperature, you are recommended to choose full stainless steel for both body, sleeve and plug, and FKM sealing. At present, only 1/4" flow body is available for this series. If you need a larger flow rate, it is recommended to choose IN30, IN40 series.

## Ordering code

**IH 20 - SF - 02 B**

- ◆ IH American series ————
- ◆ Body size ————  
20: 1/4"
- ◆ Coupling type ————  
SF: Female socket  
SM: Male socket  
SH: Hose barb socket
- ◆ Thread code ————  
02: 1/4"NPT  
03: 3/8"NPT  
04: 1/2"NPT
- ◆ Material code ————  
B: Brass  
S: Carbon steel  
SS: Stainless steel SUS304/303

## Plug profile



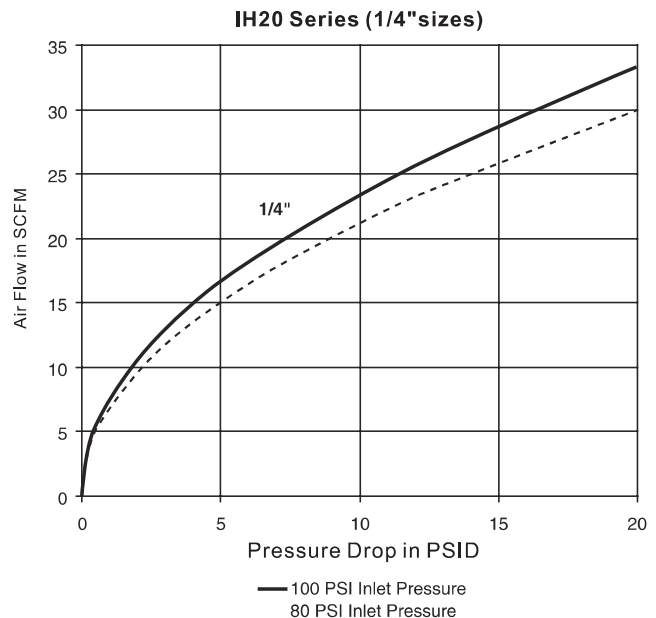
## Compatible with

FOKCA	IN20
INDUSTRIAL	1/4"
PARKER	20
RECTUS	23
HANSEN	3000
CEJN	310
ATLAS COPCO QIC	08

## Specification

Series	IH20
Body Size(in.)	1/4"
Maximum Pressure(MPa)	2.0MPa
Temperature Range	-10°C ~ +70°C
Locking Device	6 balls

## Performance

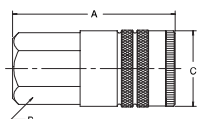


# IH Series High Pressure Type Quick Coupling

—○—+— Self sealing socket+Thru-type plug

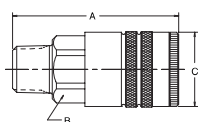
## Sockets/Couplers

### Female Pipe Thread



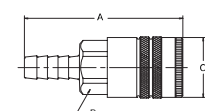
Model	Body Size	Thread -T	Overall (A)	Hex Size (B)	Diameter (C)
IH20-SF-02	1/4	1/4"NPT	50	19	24.2

### Male Pipe Thread



Model	Body Size	Thread -T	Overall (A)	Hex Size (B)	Diameter (C)
IH20-SF-02	1/4	1/4"NPT	51.2	19	24.2

### Standard Hose Barb



Model	Body Size	Thread -T	Overall (A)	Hex Size (B)	Diameter (C)
IH20-SH-1/4	1/4	1/4"	58.6	19	24.2