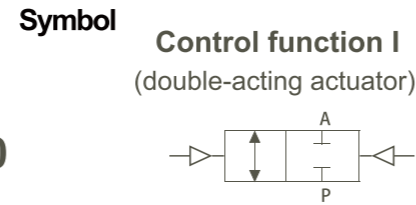


# Pneumatically Operated Drain Valve

## Series DV100/DV200



**2/2-way Drain Valve**  
**Pneumatically Operated, for medium up to +120° C, threaded Port and Tri-Clamp connection DN 15-50**



### How to Order

DV100 P 015 NC S x 63mm



DV100P032NCS



DV100S050NCS



DV200A020NCS



DV200C020NCS

**Acting Type**

<b>S</b>	Single acting	<b>D</b>	Double acting
----------	---------------	----------	---------------

**Body Material**

<b>Blank</b>	S.S 304 (standard)
--------------	--------------------

**Control Function**

<b>NO</b>	Normally open
<b>NC</b>	Normally closed (standard)
<b>Blank</b>	

**Nominal Diameter**

15	G1/2	20	G3/4
25	G 1	32	G1 1/4
40	G1 1/2	50	G 2

**Actuator Material Code**

<b>P</b>	PA Actuator
<b>S</b>	S.S. Actuator
<b>A</b>	Aluminum Actuator
<b>C</b>	Aluminum pneumatic Cylinder

**Model**

<b>DV100</b>	Drain Valve Threaded Ends
<b>DV200</b>	Drain Valve Tri-Clamp Ends

### Actuator Size

Port Size	Standard Actuator Size (mm)			
	PA	S.S.	AL	C
DN15	40,50	40,50	40,50	25
DN20	50,63,80	50,63,90	50,63,80	25
DN25	50,63,80	50,63,90	50,63,80	32
DN32	63,80	63,90	63,80	40
DN40	63,80	63,90	63,80	50
DN50	63,80	63,90	63,80	63

◆ DV100/DV200 series plunger pilot drain valve is operated by a piston actuator, either single acting or double acting. Actuators are made of four different materials, applicable to different ambient temperature; 2/2-way stainless steel valve with big flow capacity. Maintenance free, manual switching can be achieved conveniently.

# Pneumatically Operated Drain Valve

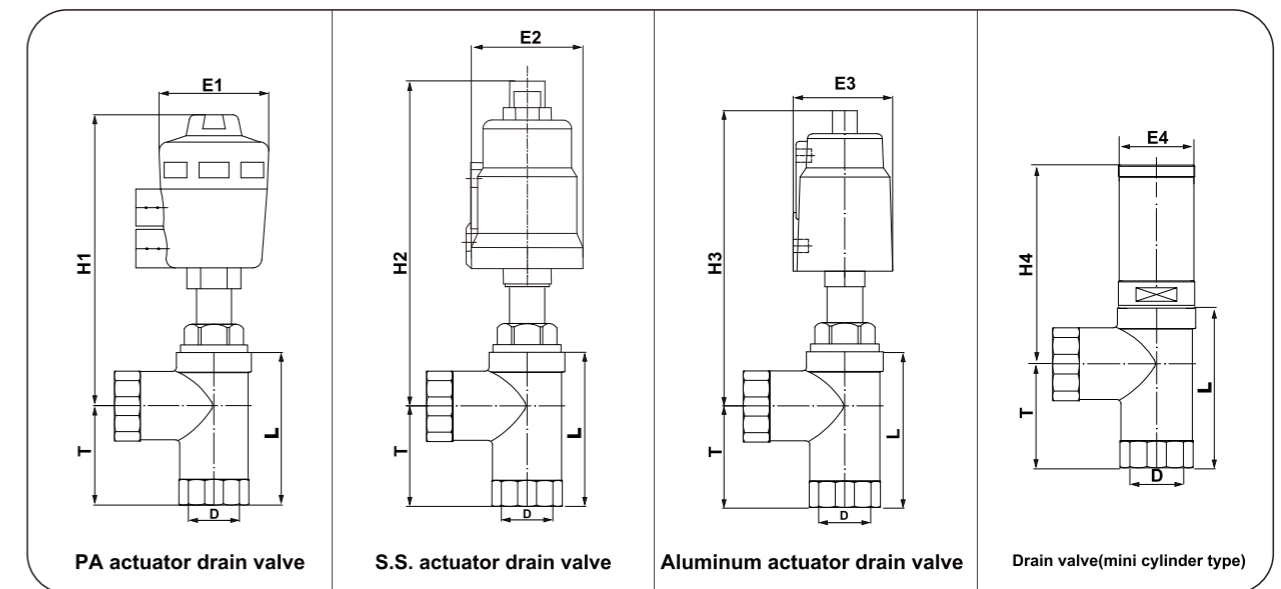
## Series DV100/DV200

### Specifications

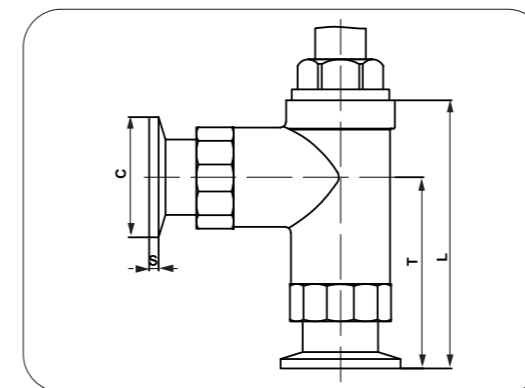
Model /Specifications	DN15	DN20	DN25	DN32	DN40	DN50
Control Function	2/2-way pneumatically operated drain valve					
Actuator Material	PA Actuator/S.S. Actuator/Aluminum Actuator/pneumatic cylinder					
Valve Body Material	S.S304					
Nominal Pressure	PN16(body)					
Operating Method	Plunger Pilot					
Ambient and Fluid	Water,alcohol,oils, fuels,hydraulic fluid,alkaline solutions, salt solution,organic solutions, hot water,steam					
Viscosity	Max.600 mm <sup>2</sup> s					
Medium Temperature	-10~120°C					
Ambient Temperature	PA: -10~60°C /Aluminum Actuator: -10~140°C					
Installation	As required, preferably with actuator in upright position					
Control Medium	Neutral gases,air					
Seat Seal	PTFE/FPM/NBR					
Piston Seal	FPM/NBR					
Mini.Pilot Pressure (bar)	4.5	4.5	4.5	5.0	5.2	5.2
Port Size	G1/2	G3/4	G 1	G1 1/4	G1 1/2	G 2
Nominal Diameter (mm)	13	18	24	31	35	45

### Dimensions [mm]

#### 2/2 way Drain Valve (Threaded Ends)



#### 2/2 Drain valve (Tri-clamp ends)



Type	D	T	L	E1	E2	E3	E4	H1	H2	H3	H4
DN 15	G 1/2	47	77	63	63	65	32	174	177	177	105
DN 20	G 3/4	47	77	63	63	65	38	174	177	177	115
DN 25	G 1	55	89	63	63	65	46	177	180	180	130
DN 32	G 1-1/4	55	89	80	76	77	56	216	215	210	135
DN 40	G 1-1/2	76	117	80	76	77	56	223	222	217	143
DN 50	G 2	76	133	80	76	77	69	239	238	233	165

Type	L	T	C	S
DN 15	97	67	50.5	3.5
DN 20	97	67	50.5	3.5
DN 25	109	75	50.5	3.5
DN 32	112	78	50.5	4.5
DN 40	140	99	64	4.5
DN 50	160	103	64	4.5