

Exhaust Valve

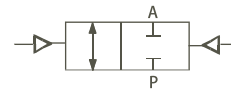
Series EV10/EV20

2/2-way Exhaust Valve for EPS foam machinery Thread port DN 25/40/50/80

- 4-way valve body design;
- Double acting liberty actuator

Symbol

Control function I
(double-acting actuator)



◆ Dimensions [mm]

◆ How to Order

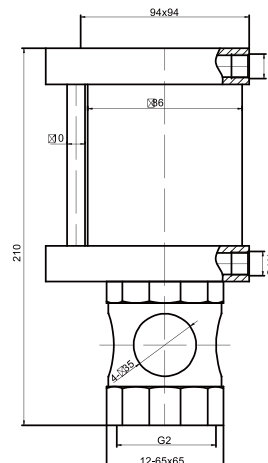
EV10-50



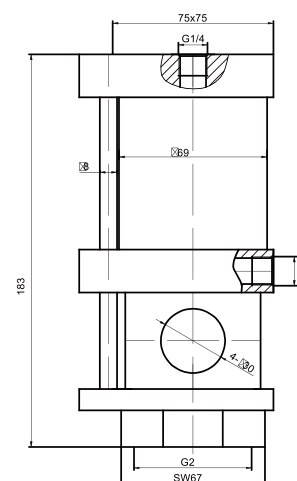
EV20-50



EV10-50



EV20-50



- ◆ Series EV10/20 consists of 2-way direct acting pneumatically operated exhaust valve, specifically designed for EPS foam machinery, available in normally closed liberty constructions. Built for specific applications, valve body made of stainless steel and controlling actuator made of aluminum alloy.

- ◆ **Specifications**
Medium temperature: -10° C to 120° C
Ambient temperature -10° C to 80° C
Working pressure: 0~16 bar
Pilot fluid: Filtered air
Valve body material: SS304
Actuator material: Aluminum alloy
Stem/Disc material: SS304
Disc seal: PTFE/FPM/NBR
Control pressure: 3~8bar
Acting type: double acting liberty